

Trenching

*Progress for **masters of**
the construction site!*



BETEK

Progress!



Tool range

Page

Weld-on Cutter			8
Dragon Tooth	Shank system	Ø 22mm / 0,87"	9
Round shank cutter bits	Shank system	Ø 11,3mm / 0,44"	9
Round shank cutter bits	Shank system	Ø 14mm / 0,55"	10
Round shank cutter bits	Shank system	Ø 18,7mm / 0,74"	11
Round shank cutter bits	Shank system	Ø 19,4mm / 0,76"	12 – 14
Round shank cutter bits	Shank system	Ø 22mm / 0,87"	15 – 19
Round shank cutter bits	Shank system	Ø 25mm / 1"	20 – 24
Round shank cutter bits	Shank system	Ø 38 / 30mm - 1,5 / 1,18"	25 – 31
Wear protection			32 – 33
Request form / Order form			35

Below the pictures of tools on the following pages you will find the following information:



Dimensions: mm / inches

Welding instructions see:

www.betek.de/en/productprogramme/trenching-userinfo.html

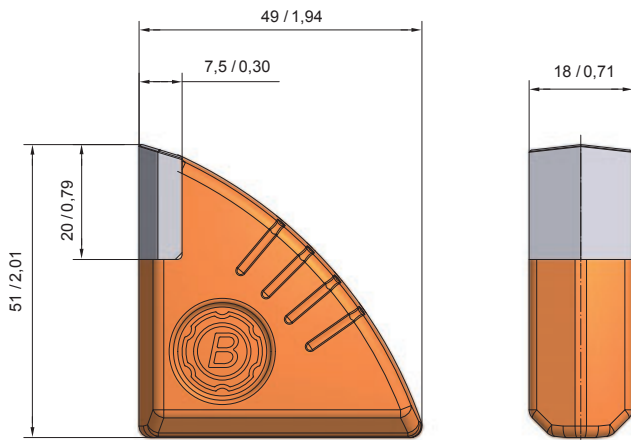


SUPPORT:

Germany: trenchtek@betek.de
Tel.: +49 (0) 74 22 / 5 65-590

USA: trenchtek-usa@betek.de

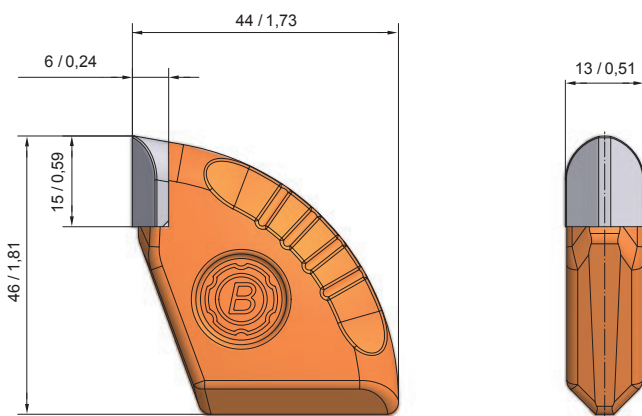
Weld-on Cutter



BFZ87

BFZ 18/2

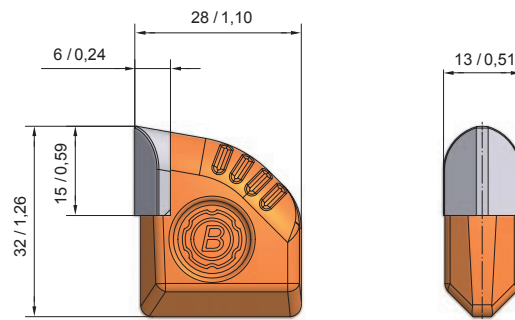
50



BFZ318

BFZ 46x44x13

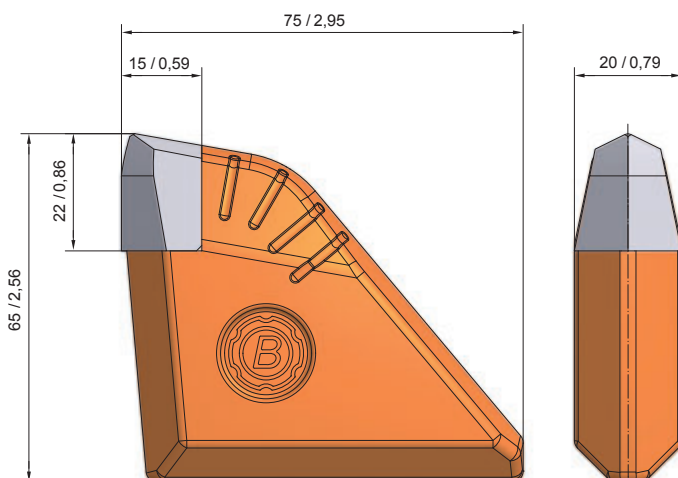
100



BFZ321

BFZ 32x27x13

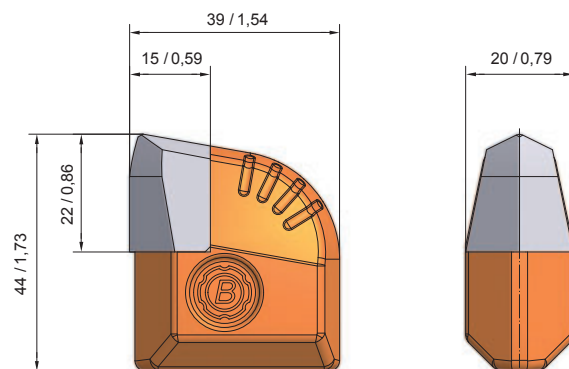
100



BFZ319

BFZ 75x65x20

25

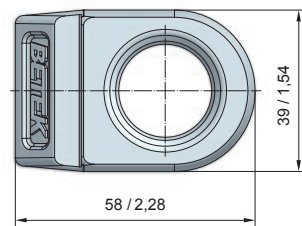
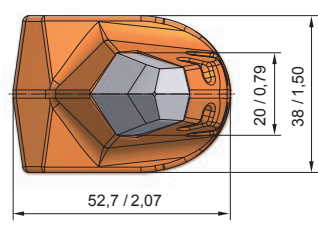
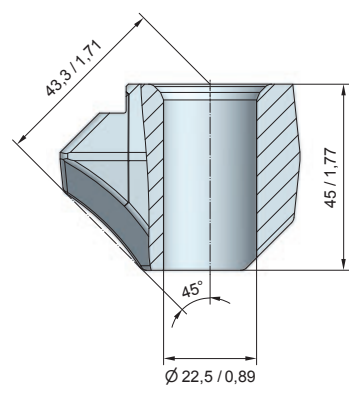
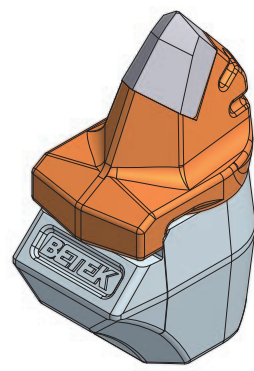
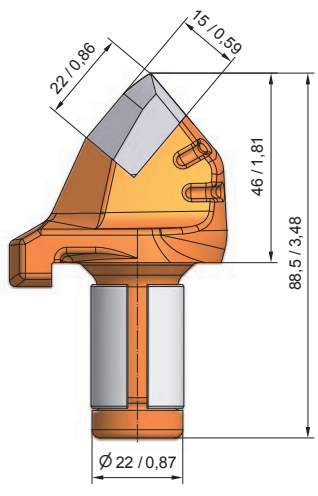


BFZ320

BFZ 44x39x22

50

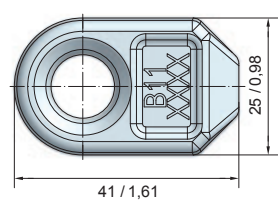
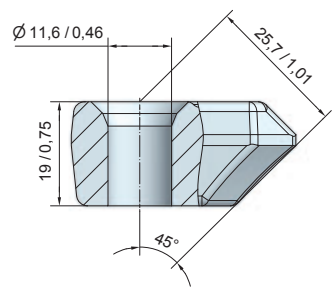
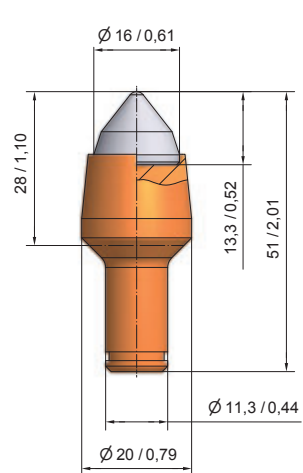
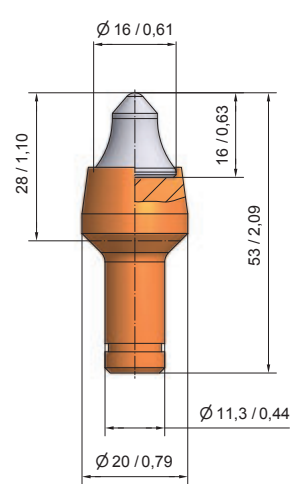
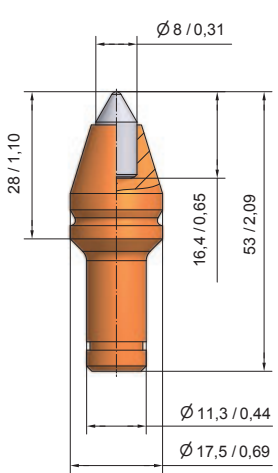
Dragon Tooth Shank system Ø 22mm/0,87"



BFR07
BFR 46-22 40

BHR133
B10/22-F 40

Round shank cutter bits Shank system Ø 11,3mm/0,44"



BM11
BM 8-11.3 200

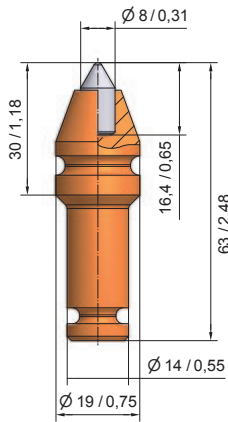
BM10
BM 4-11.3 200

BM46
BM 3-11.3 200

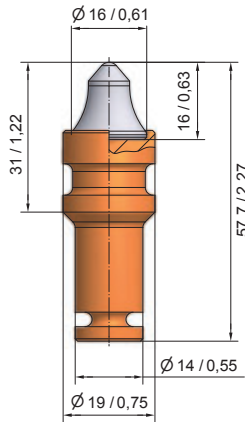


BHR03
B 11 200

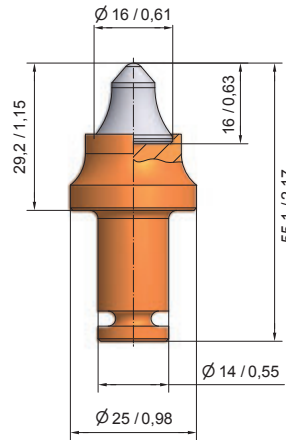
Shank system Ø 14mm/0,55"



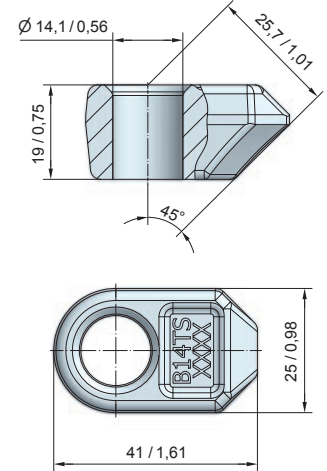
BM84
BM 8-14



BM44
BM 4-14



BM76
BM 4-14/TS

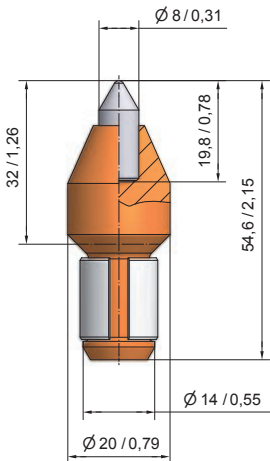


BHR171
B14-TS

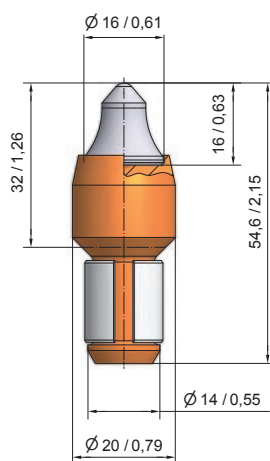


lock ring SR90

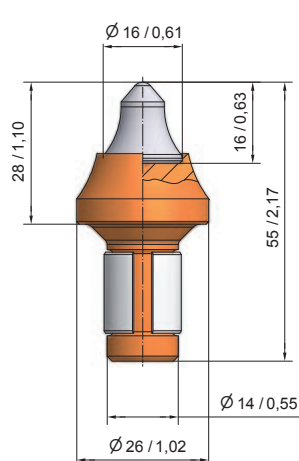
Shank system Ø 14mm/0,55"



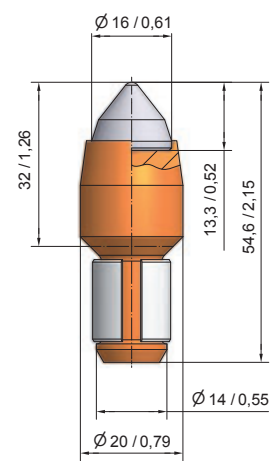
BM56
BM 8-14/2



BM55
BM 4-14/2



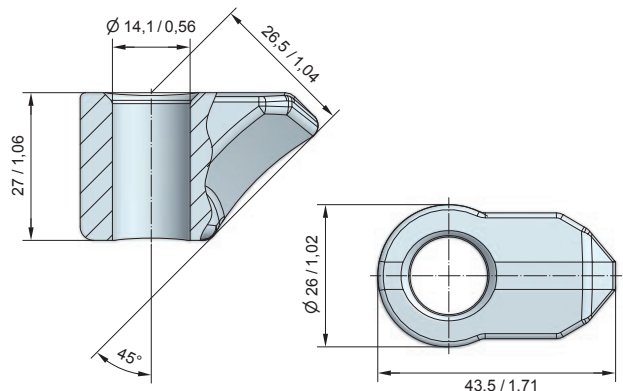
BM82
BM 4-14/3



BM60
BM 3-14/H



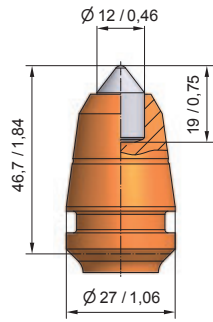
BZ44
Bit extractor



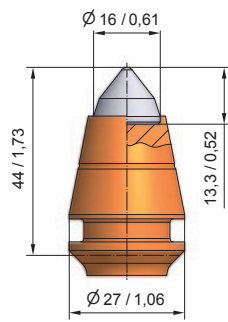
BHR109
B14



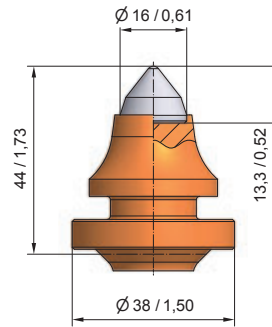
Shank system Ø 18,7mm/0,74"



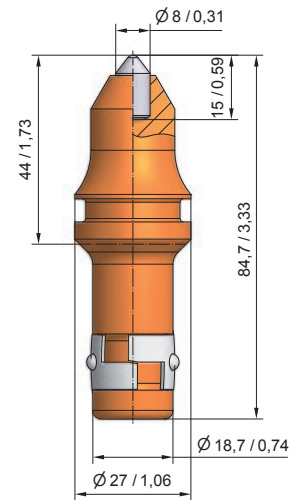
BTR02
B43 HD K12



BTR03
B43/3



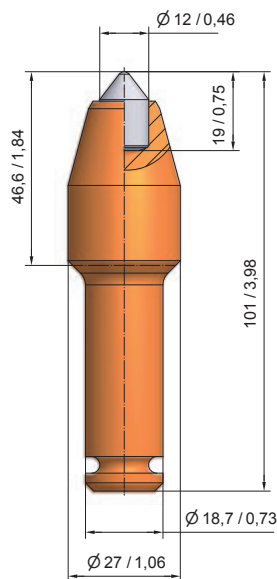
BTR09
BG19K-60.3844



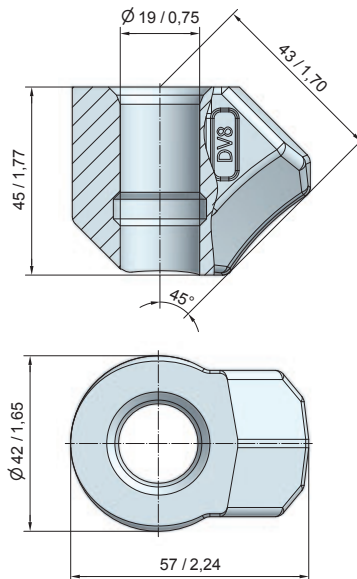
BTR01
B43K8



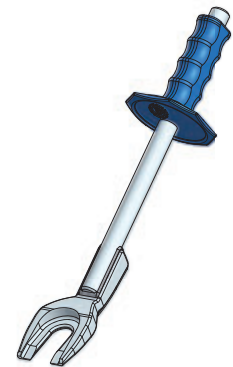
Shank system Ø 18,7mm/0,74"



BTR07
B43 K12 KS



BHR20
DV 8



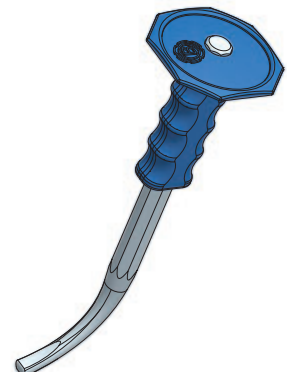
BZ42
Bit puller



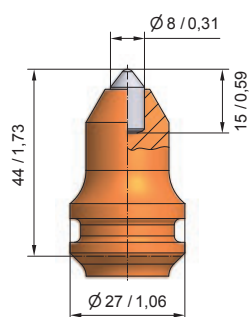
lock ring SR80



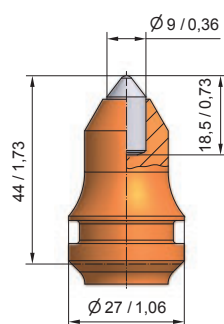
BZ38
Wedge puller



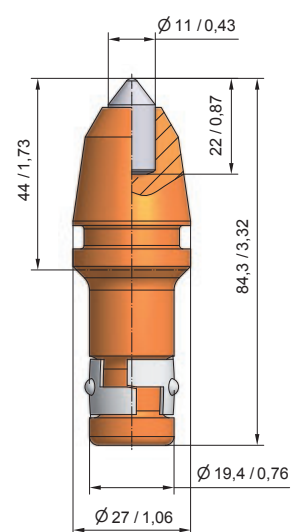
BZ43
Bit extractor

Shank system $\varnothing 19,4\text{mm}/0,76''$ 

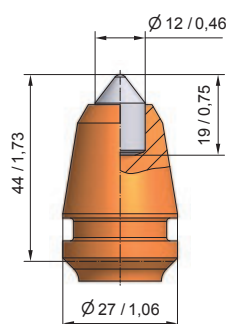
BSK22
B1 K8-K/2



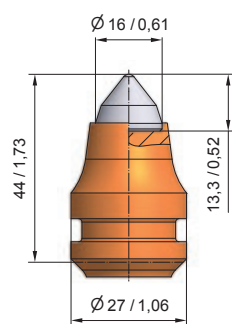
BSK15
B1 K9-K



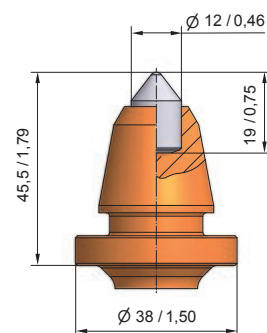
BSK16
B1 HD K11-K



BSK17
B1 HD K12-K



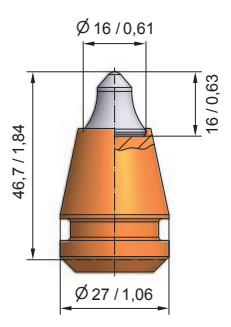
BSK12
B 3-K




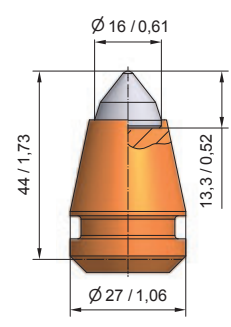
BSK21
B1-12/38-K




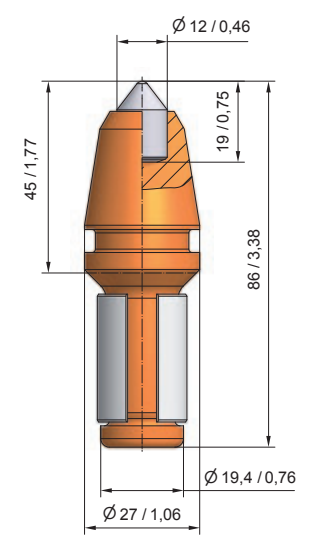
Shank system Ø 19,4mm/0,76"




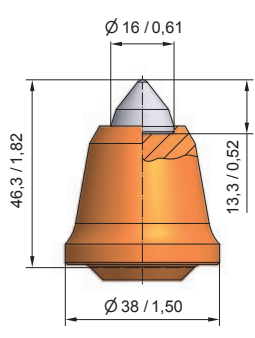
BSH204
B4 



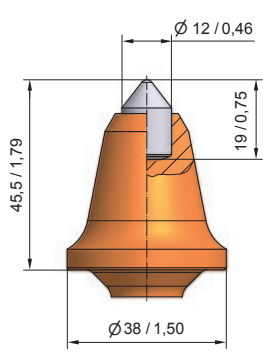
BSH09
B3 




BSH05
B1 HD K12 

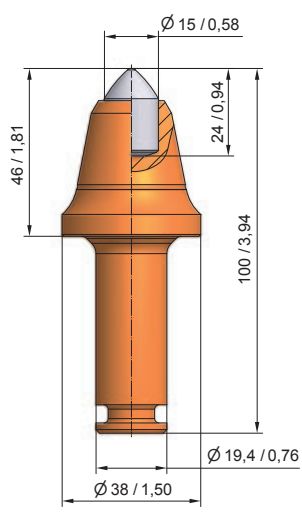



BSH211
B3/38 

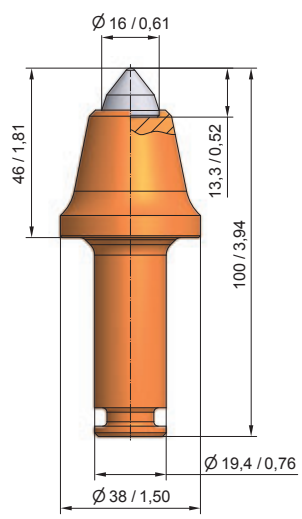



BSH210
B1-12/38 

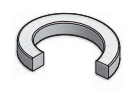
Shank system Ø 19,4mm/0,76"



BC68
BG20F-15.3846 

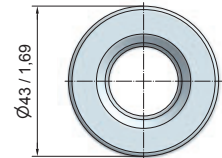
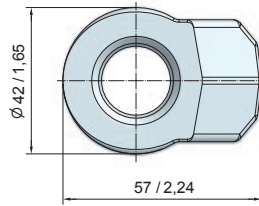
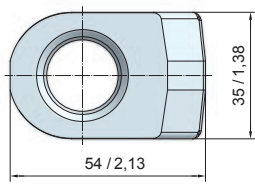
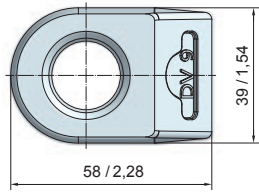
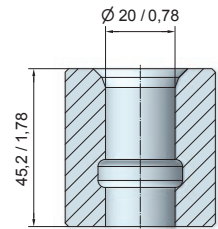
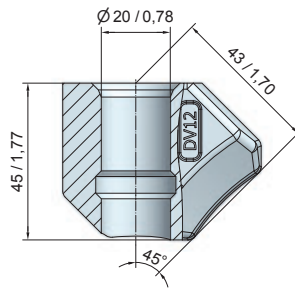
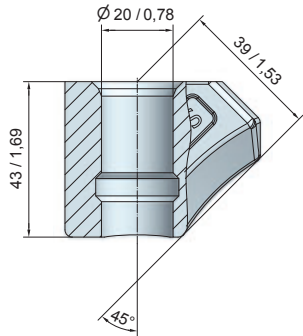
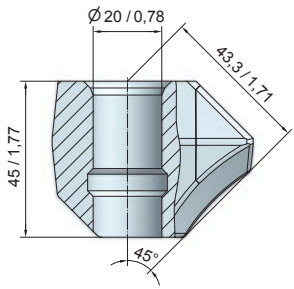


BC26
B3 KS 



lock ring SI36

Shank system Ø 19,4mm / 0,76"



BHR07
DV 9

40

BHR164
DV 9-S

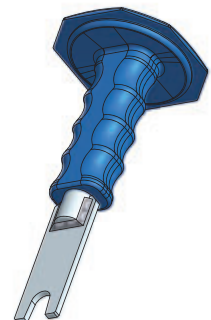
50

BHR12
DV 12

40

BHR166
BHR Ø43xBØ20

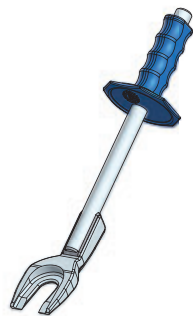
40



for lock ring SI36

BZ33
Assembly tool

BZ31
Disassembly tool



BZ42
Bit puller

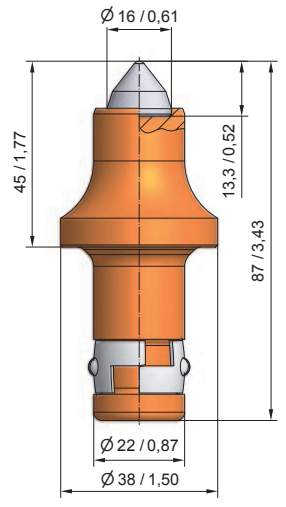


BZ43
Bit extractor



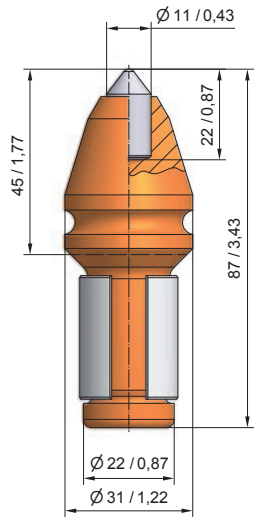
BZ38
Wedge puller

Shank system Ø 22mm/0,87"

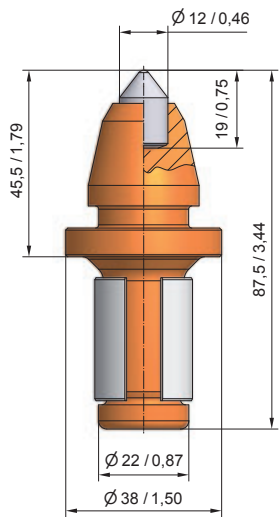


BC58
B3 S/22-K

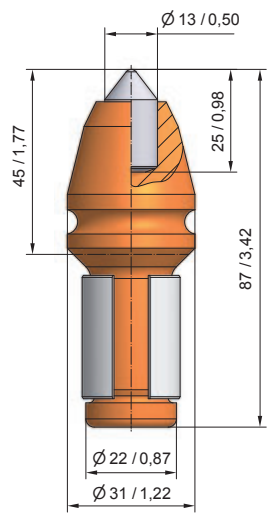
Shank system Ø 22mm/0,87"



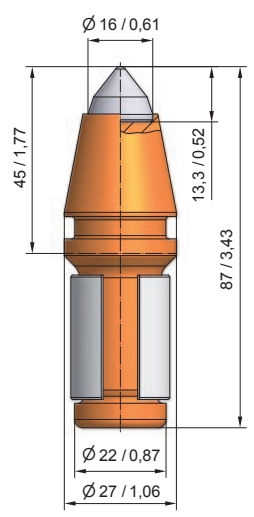
BC05
B1 HD K11/22



BC60
B1-12/22



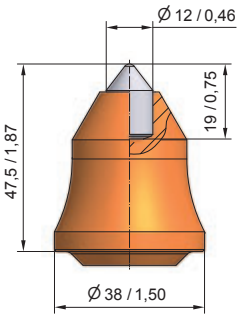
BC06
B1 HD K13/22



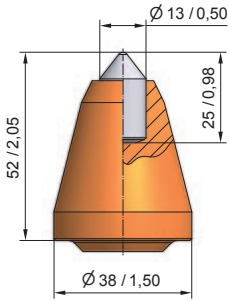
BC49
B3/22



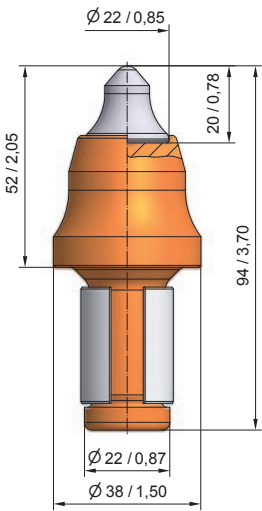
Shank system Ø 22mm/0,87"



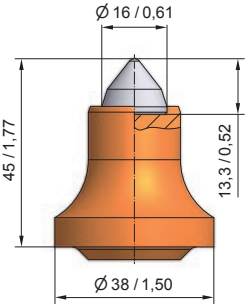
BC64
B1-12/22-B



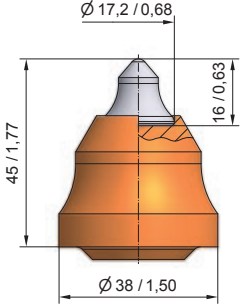
BC14
B1 HDS 38/13/22



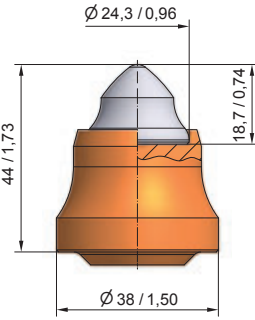
BC03
B8 S/22



BC41
B3 S/22



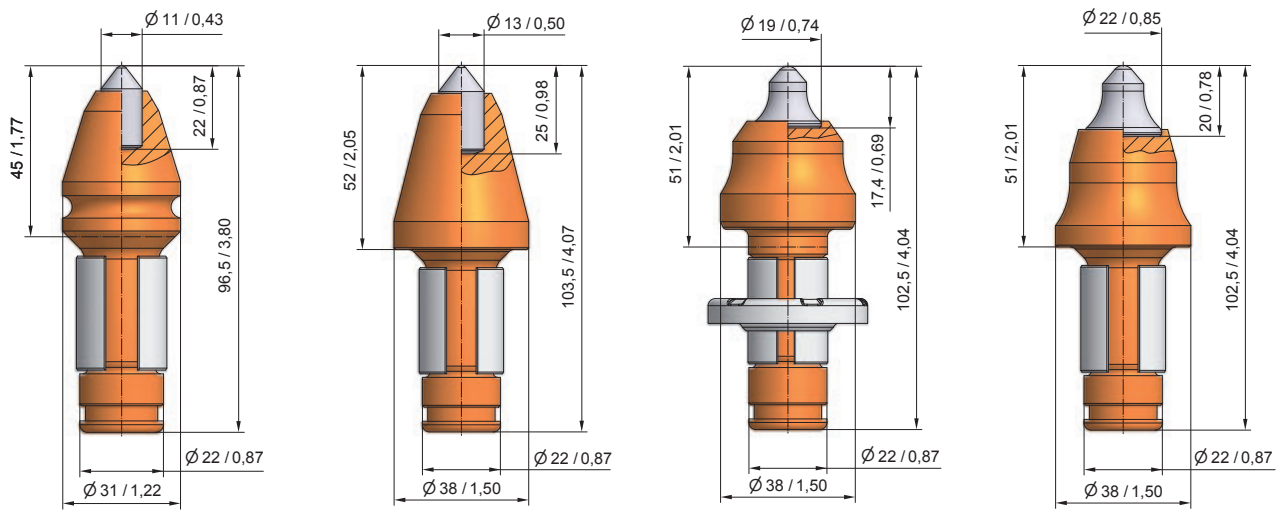
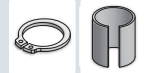
BC04
B5 S/22



BC43
B9/22



Shank system Ø 22mm/0,87"



additional lock ring SR61

BC01
B1 HD K11/22S

50

BC15
B1 HD 38/13/22/S

40

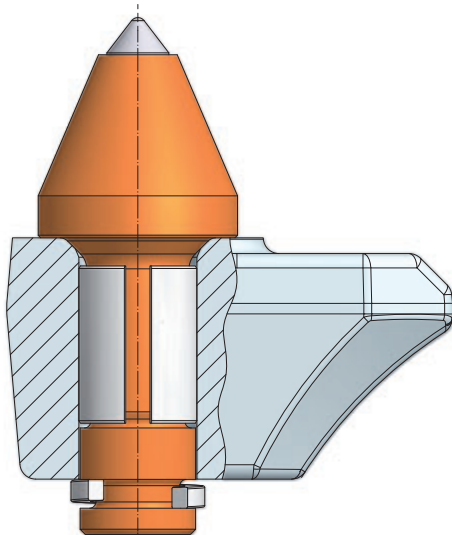
BC61
B6 V/22/S

35

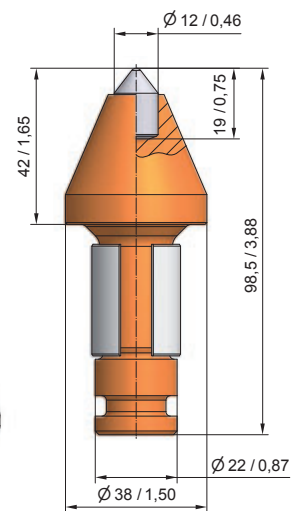
BC44
B8/22-S

40

Shank system Ø 22mm/0,87"



additional lock ring SI26

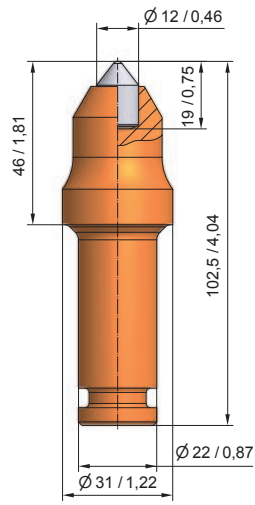
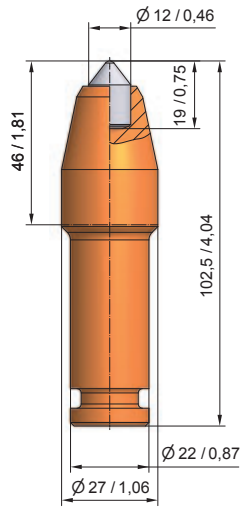


BC36
B1-12/22/SI26

40



Shank system Ø 22mm/0,87"

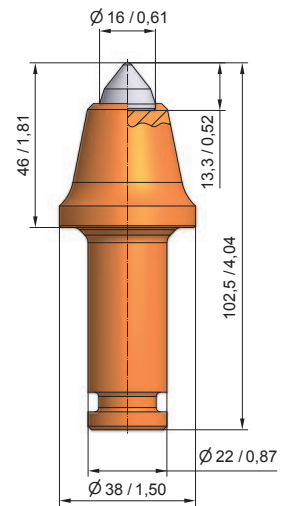
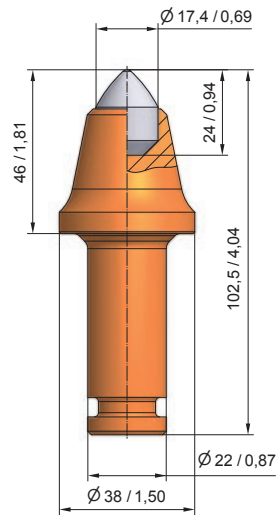
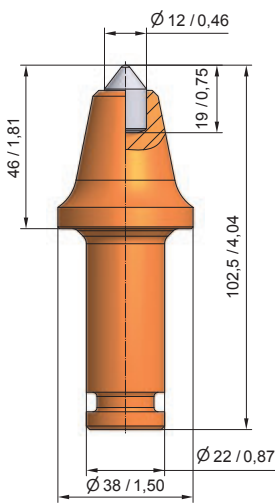


lock ring SI26

BC39
B1-12 KS22



BC25
B1 K12 KS22



BC62
B1-12/38 KS22



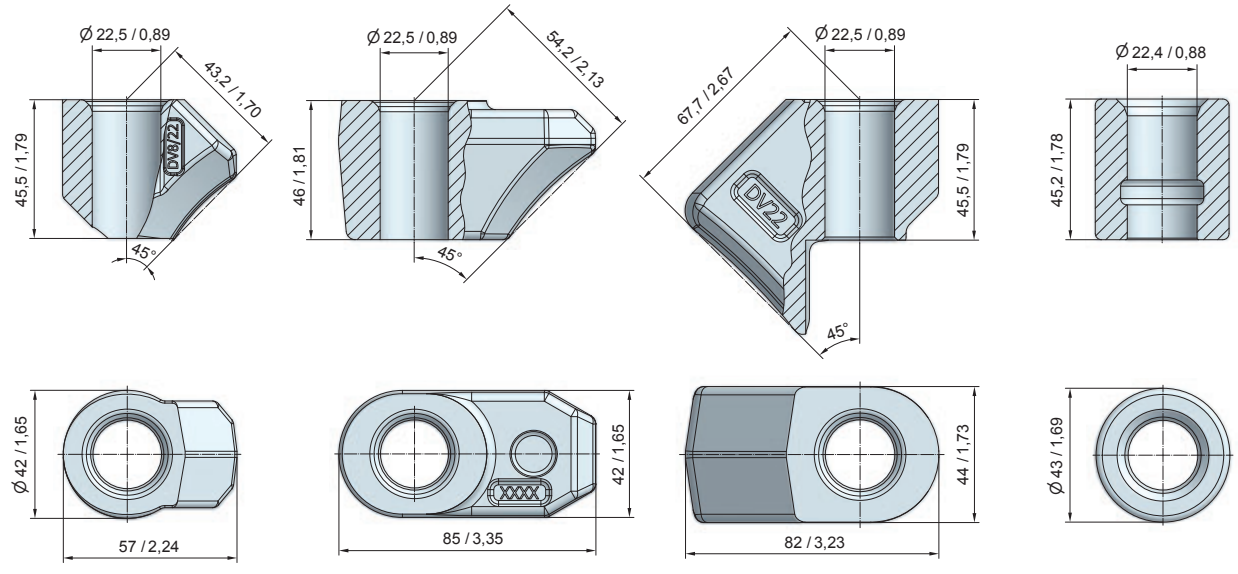
BC56
B1-17 KS22



BC33
B3 KS22



Shank system Ø 22mm/0,87"



BHR27
DV 8/22



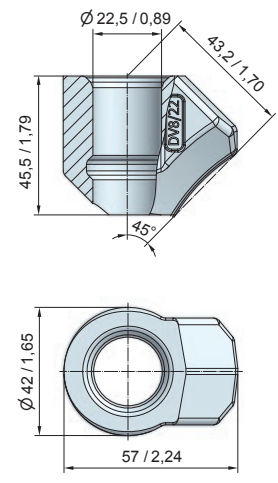
BHR120OL
B 22 S



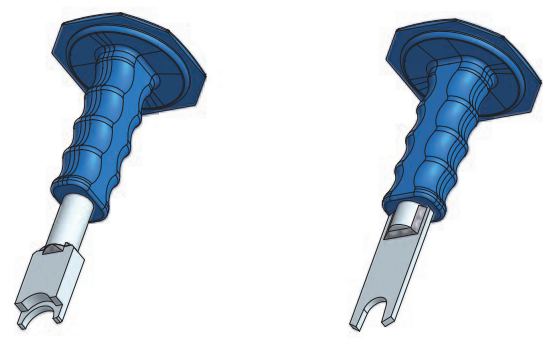
BHR30
DV 22



BHR174
BHR Ø22x45



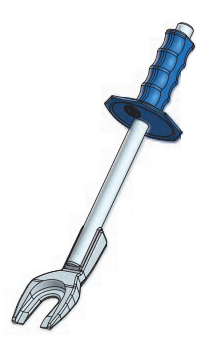
BHR176
DV 8/22-K



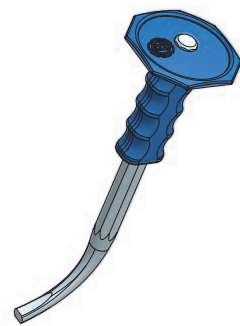
 for lock ring SI26

BZ41
Assembly tool

BZ32
Disassembly tool



BZ42
Bit puller



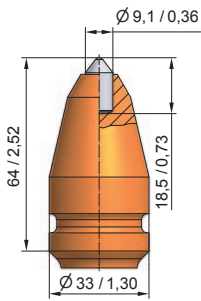
BZ43
Bit extractor



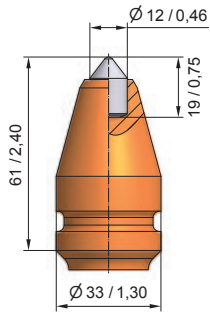
BZ38
Wedge puller



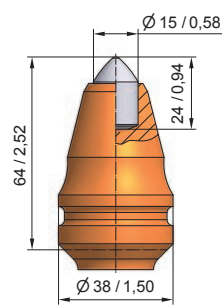
Shank system Ø 25mm / 1"



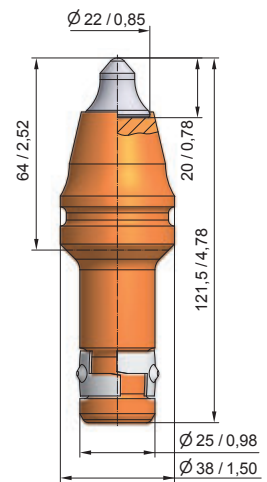
BTK01
B40 K9



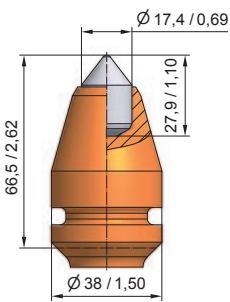
BTK03
B40 HD K12



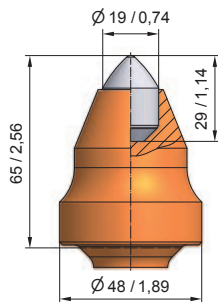
BTK10
B40 HDS



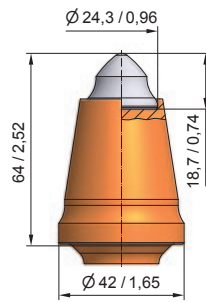
BTK20
BG25K-67.3864



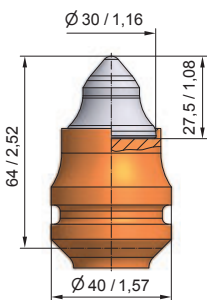
BTK70
B40 K17,5



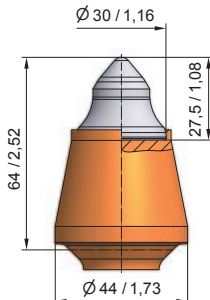
BTK54
B40 HDS19



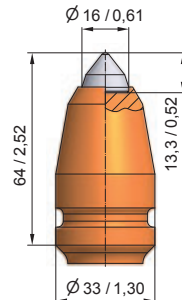
BTK87
B40 / 9



BTK23
B40 HBL



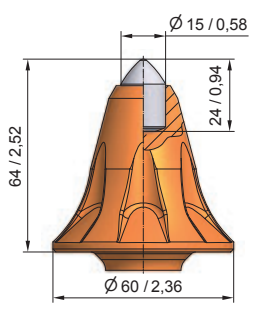
BTK26
B40-J1-HBL



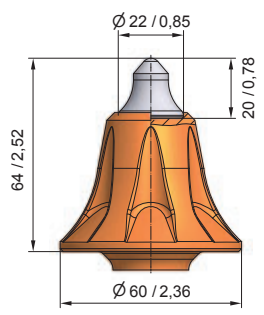
BTK16
B40 / 3



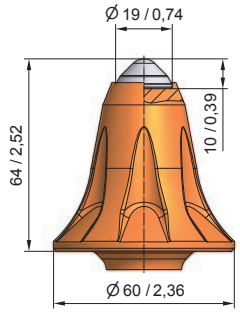
Shank system Ø 25mm / 1"



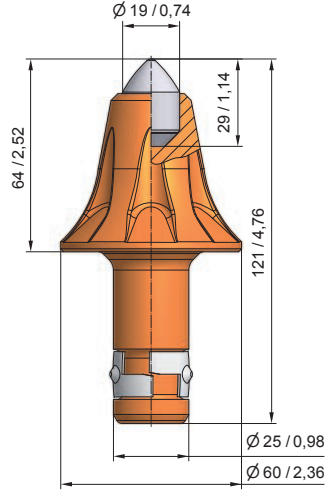
BTK81
B40 HDS/60



BTK80
B40 22/60



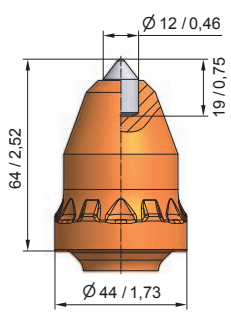
BTK82
B40 SG/60



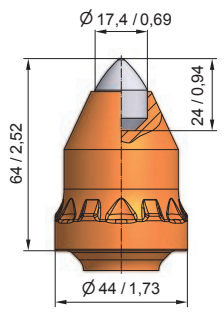
BTK89
BG25K-19.6064



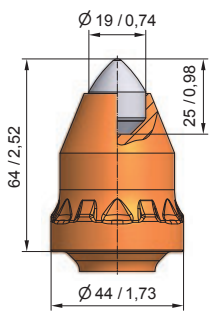
Shank system Ø 25mm / 1"



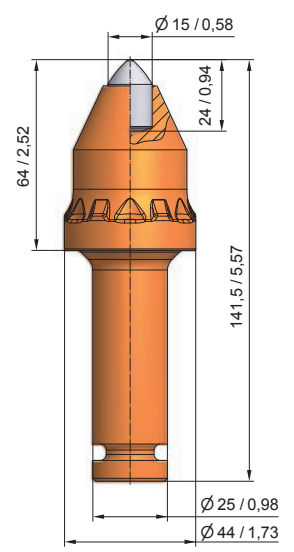
BTK115
BG25F-12.4464



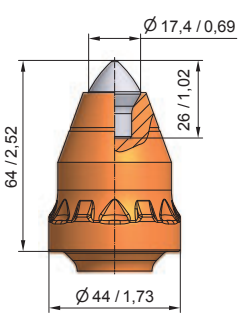
BTK116
BG25F-17.4464



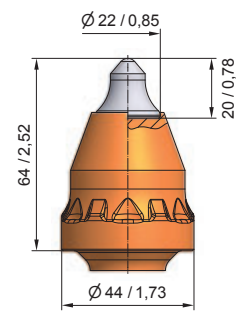
BTK119
BG25F-19.4464



BTK117
BG25F-15.4464



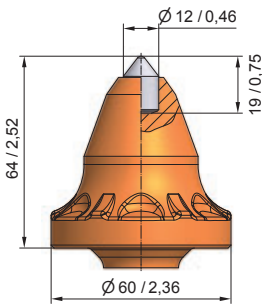
BTK112
BG25F-70.4464



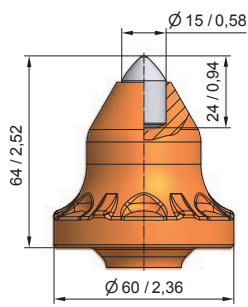
BTK118
BG25F-67.4464



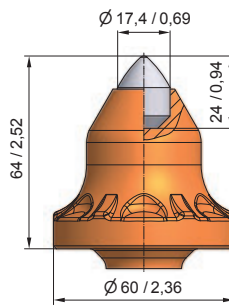
Shank system Ø 25mm / 1" Gauge 64mm / 2,5"



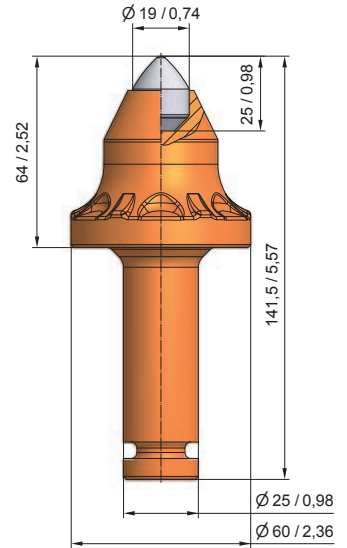
BTK114
BG25F-12.6064



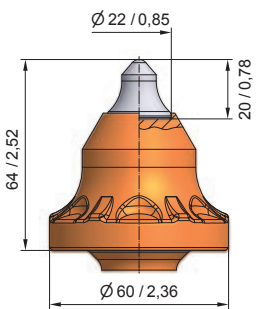
BTK120
BG25F-15.6064



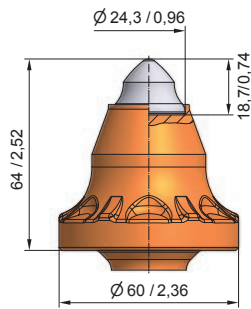
BTK121
BG25F-17.6064



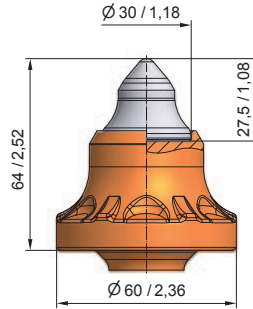
BTK122
BG25F-19.6064



BTK123
BG25F-67.6064



BTK124
BG25F-68.6064

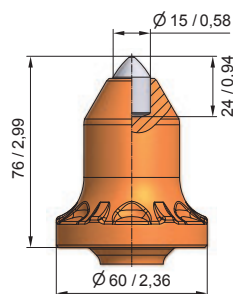


BTK125
BG25F-69.6064A

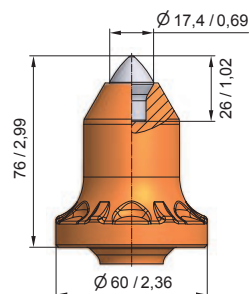


lock ring SI79 / K

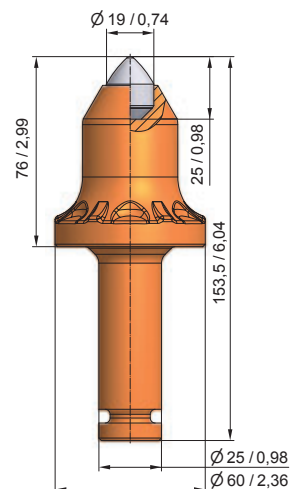
Shank system Ø 25mm / 1" Gauge 76mm / 3,0"



BTK113
BG25F-15.6076



BTK126
BG25F-70.6076A

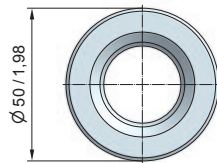
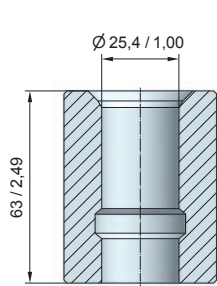


BTK127
BG25F-19.6076A

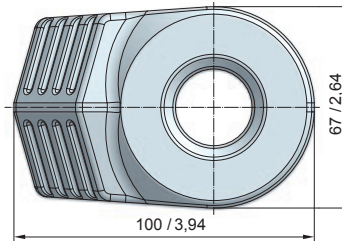
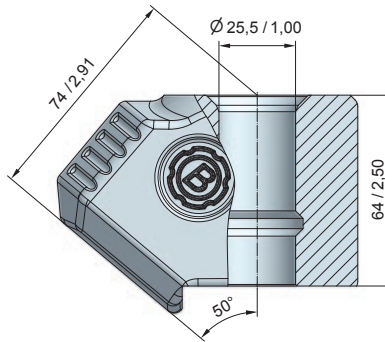


lock ring SI79 / K

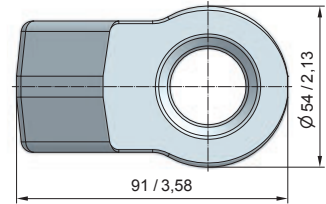
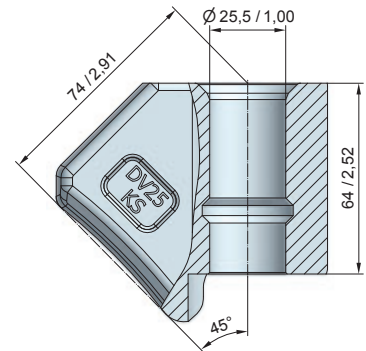
Shank system Ø 25mm / 1"



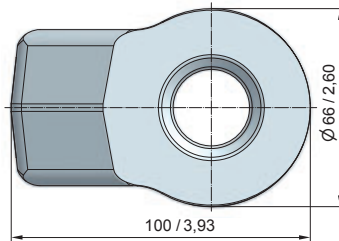
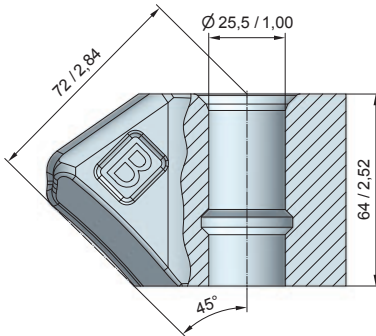
BHR167 25
BHR Ø50xBØ25



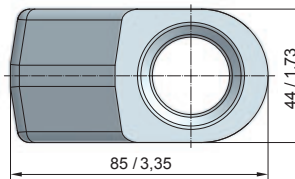
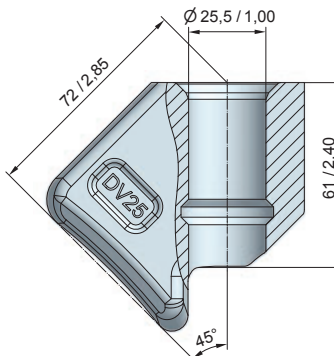
BHR186 6
B 25.6750



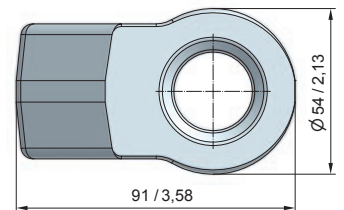
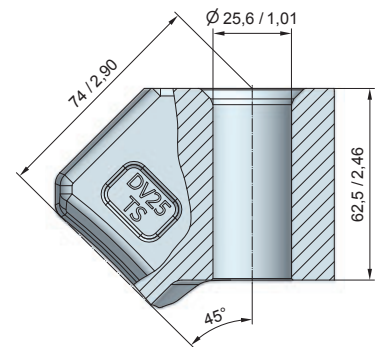
BHR121 10
DV 25 KS



BHR34 10
DV 40 VS

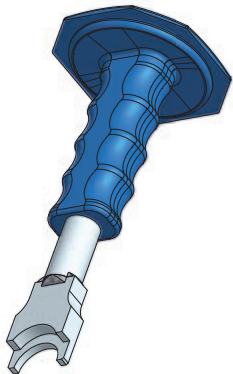


BHR31 15
DV 25



BHR145 10
DV 25 TS

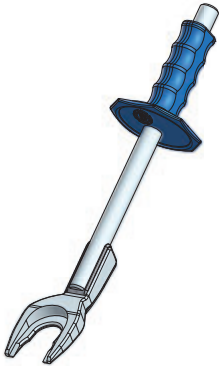
Shank system Ø 25mm / 1"



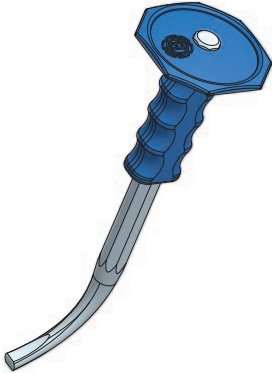
for lock ring SI79 / K

BZ37
Assembly tool

BZ36
Disassembly tool



BZ22
Bit puller



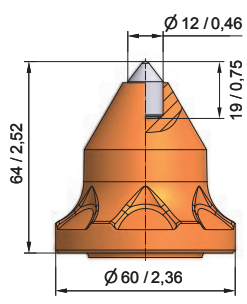
BZ43
Bit extractor



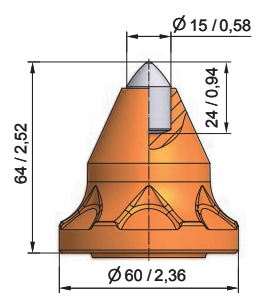
BZ38
Wedge puller



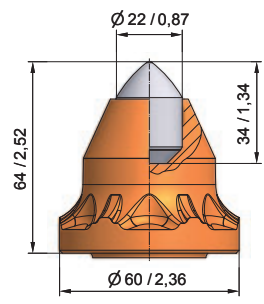
Shank system Ø 38/30mm - 1,5/1,18" Gauge 64mm/2,5"



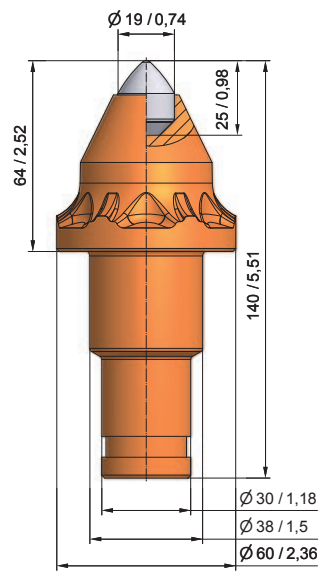
BKS165
BS38W-12.6064A



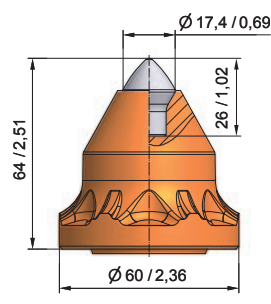
BKS144
BS38W-15.6064



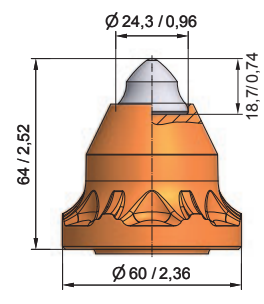
BKS162
BS38W-22.6064



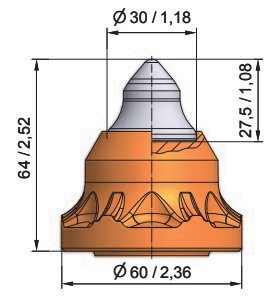
BKS151
BS38W-19.6064



BKS163
BS38W-70.6064

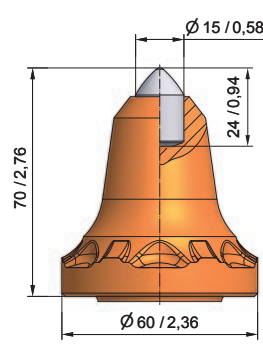


BKS160
BS38W-68.6064

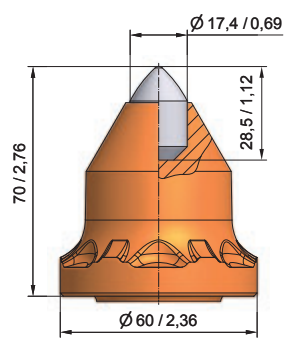


BKS161
BS38W-69.6064

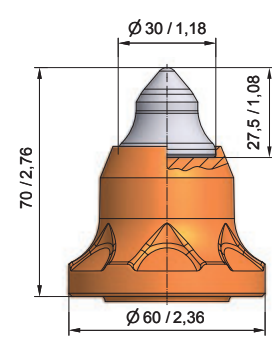
Shank system Ø 38/30mm - 1,5/1,18" Gauge 70mm/2,75"



BKS168
BS38W-15.6070

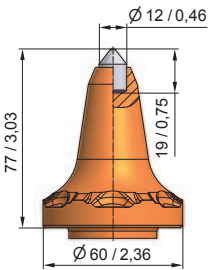



BKS166
BS38W-17.6070

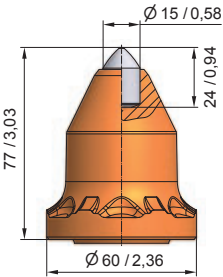



BKS167
BS38W-69.6070A

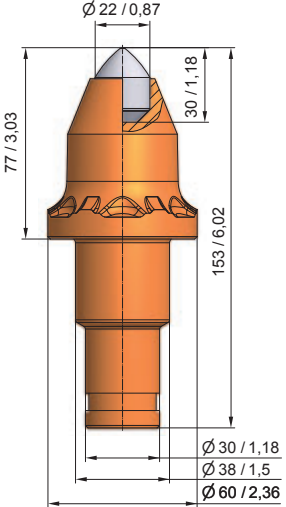
Shank system Ø 38/30mm - 1,5/1,18" Gauge 77mm/3,0"




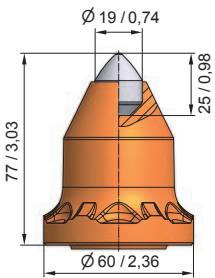
BKS185 
BS38W-12.6077




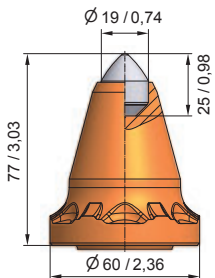
BKS169 
BS38W-15.6077A




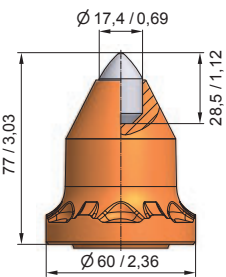
BKS170 
BS38W-22.6077




BKS172 
BS38W-19.6077



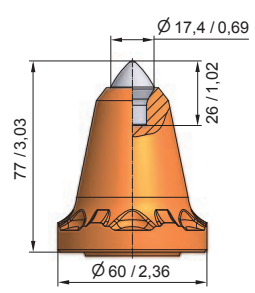
BKS173 
BS38W-19.6077A



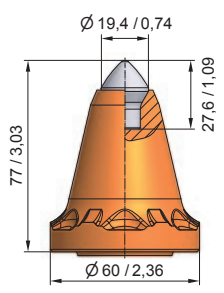
BKS171 
BS38W-17.6077



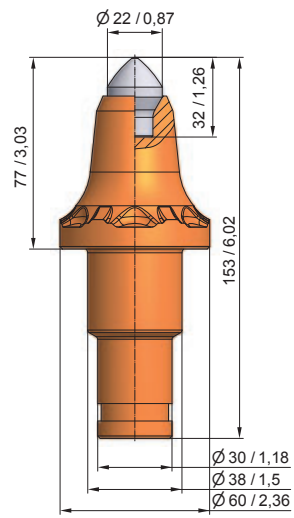
Shank system Ø 38/30mm - 1,5/1,18" Gauge 77mm/3,0"



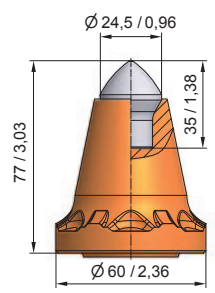
BKS174
BS38W-70.6077



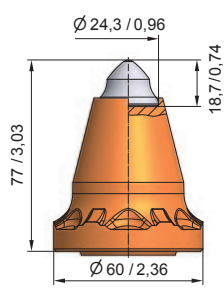
BKS175
BS38W-72.6077



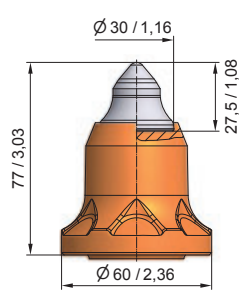
BKS158
BS38W-73.6077



BKS176
BS38W-71.6077

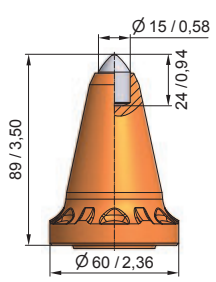


BKS178
BS38W-68.6077

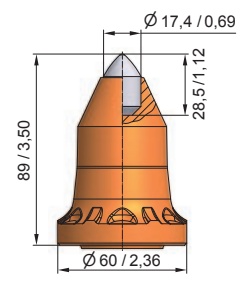


BKS177
BS38W-69.6077A

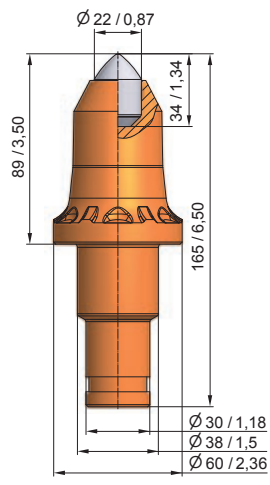
Shank system Ø 38/30mm - 1,5/1,18" Gauge 89mm/3,5"



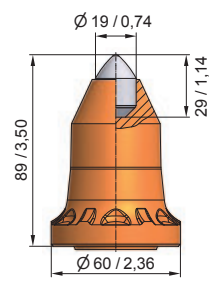
BKS179
BS38W-15.6089



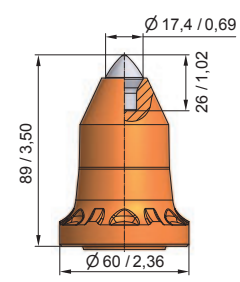
BKS180
BS38W-17.6089



BKS183
BS38W-22.6089

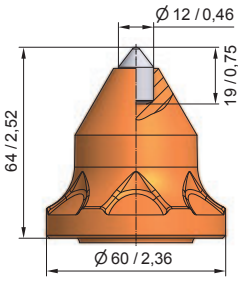



BKS181
BS38W-19.6089

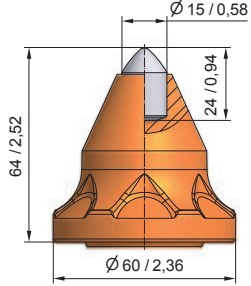



BKS182
BS38W-70.6089

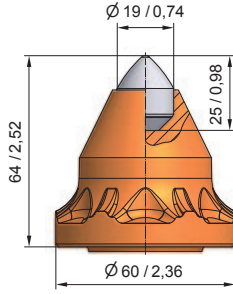
Shank system Ø 38/30mm - 1,5/1,18" Gauge 64mm/2,5" 




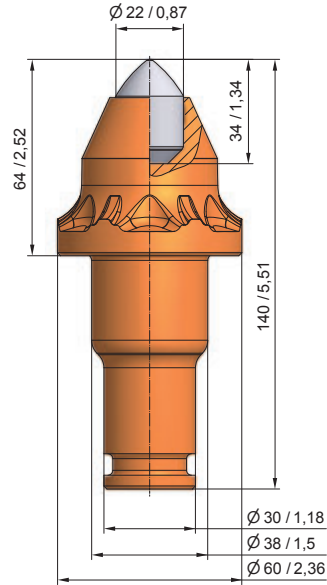
BKF27 
BS38F-12.6064




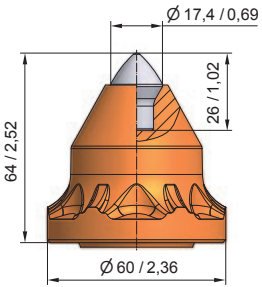
BKF24 
BS38F-15.6064




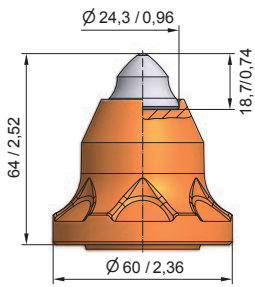
BKF22 
BS38F-19.6064




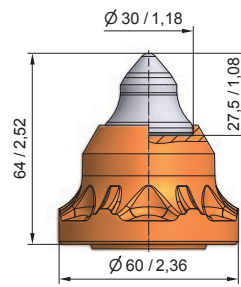
BKF26 
BS38F-22.6064




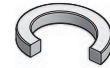
BKF25 
BS38F-70.6064



BKF28 
BS38F-68.6064



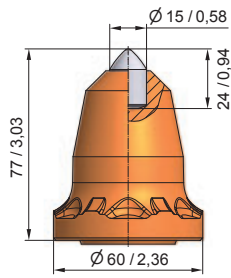
BKF29 
BS38F-69.6064



lock ring SI35 / 22

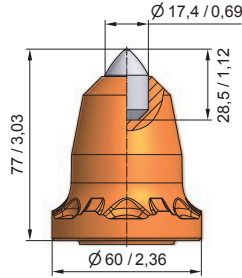


Shank system Ø 38/30mm - 1,5/1,18" Gauge 77mm/3,0"



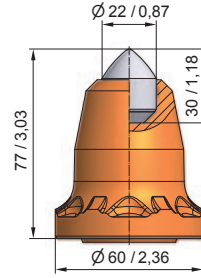
BKF32

BS38F-15.6077



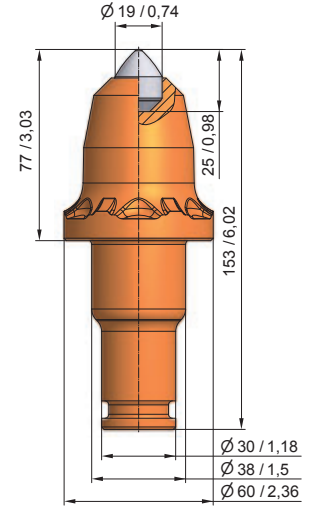
BKF33

BS38F-17.6077



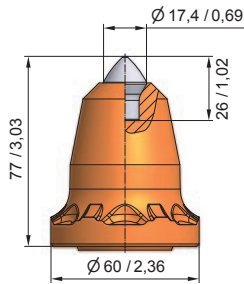
BKF31

BS38F-22.6077



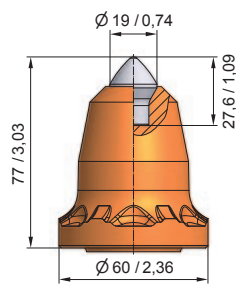
BKF30

BS38F-19.6077



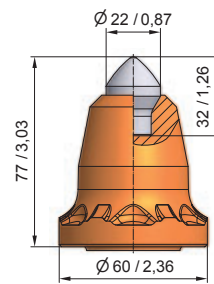
BKF40

BS38F-70.6077



BKF39

BS38F-72.6077

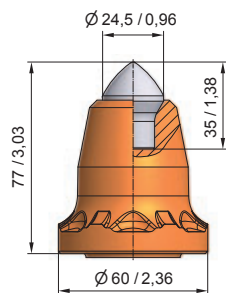
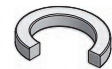


BKF38

BS38F-73.6077

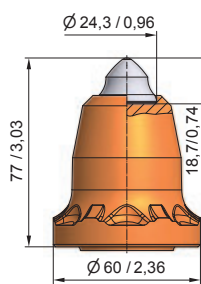


lock ring SI35 / 22



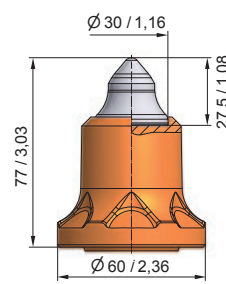
BKF36

BS38F-71.6077



BKF34

BS38F-68.6077

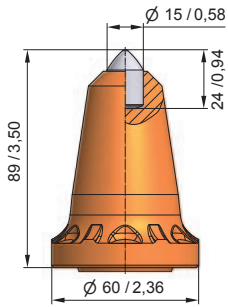


BKF37

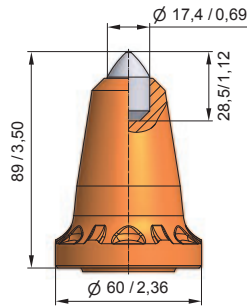
BS38F-69.6077



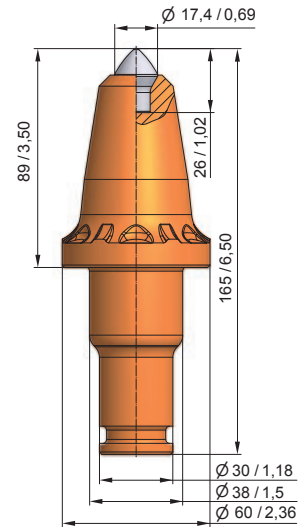
Shank system Ø 38/30mm - 1,5/1,18" Gauge 89mm/3,5"



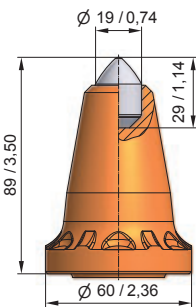
BKF41
BS38F-15.6089



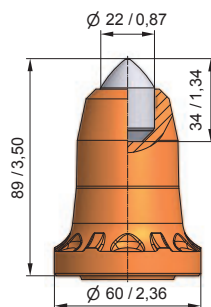
BKF42
BS38F-17.6089



BKF45
BS38F-70.6089



BKF43
BS38F-19.6089



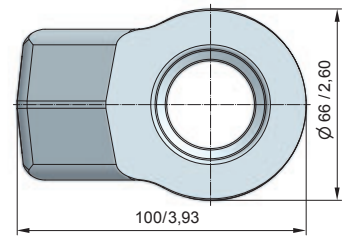
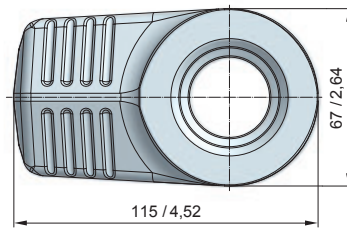
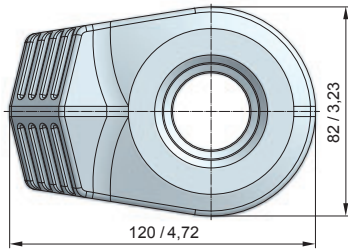
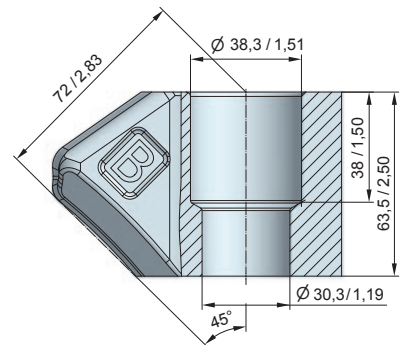
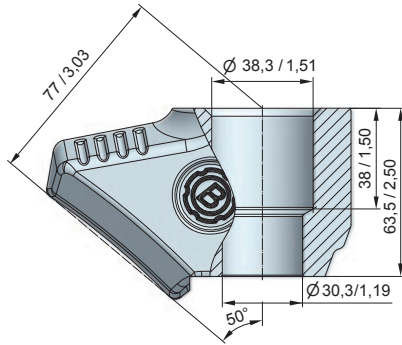
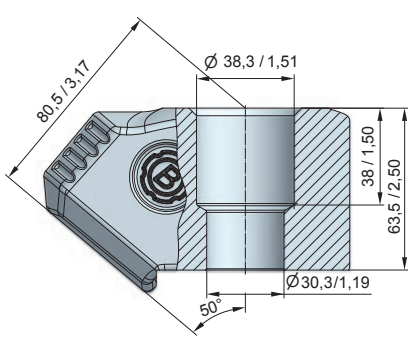
BKF44
BS38F-22.6089





lock ring SI35 / 22




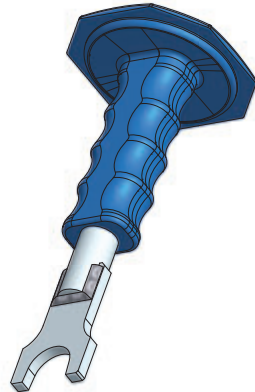
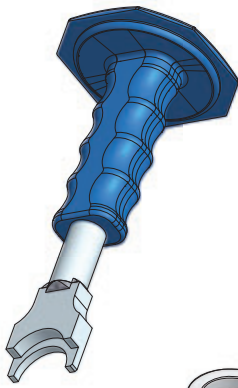
Shank system Ø 38/30mm - 1,5mm/1,18"



BHR187 
B 3830.8250

BHR188 
B 3830.6750

BHR38 
B43H



BZ35
Assembly tool

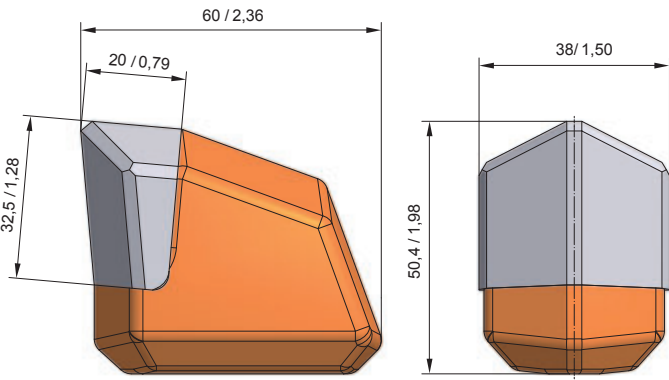
BZ34
Disassembly tool

SRZ02
Plier

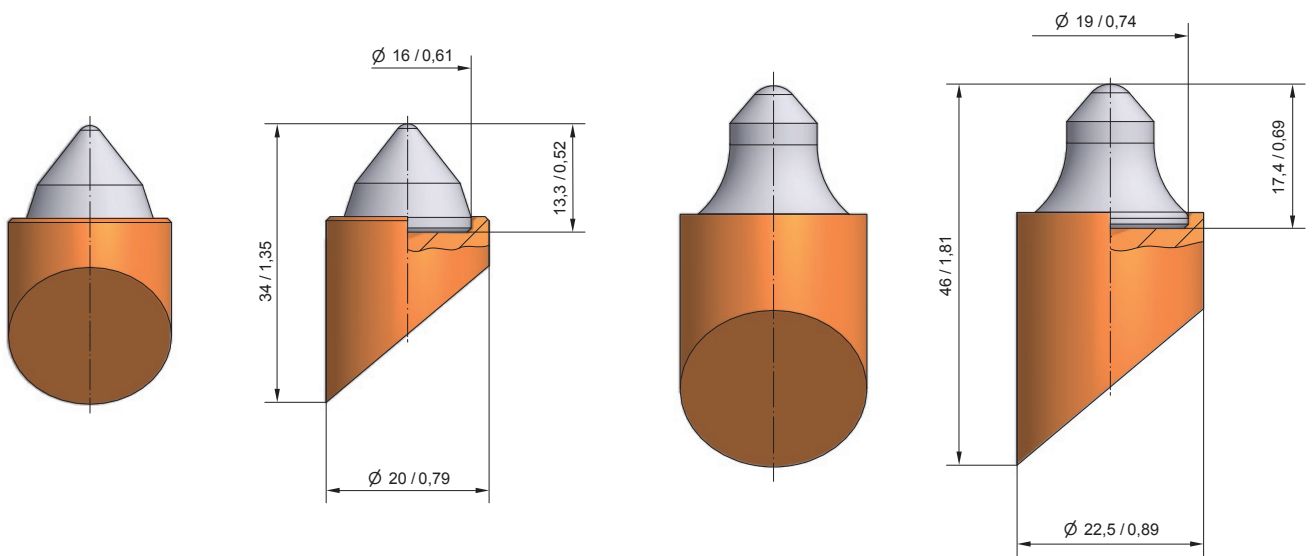


BZ39
Wedge puller

Wear protection / Weld-on Tooth



BFZ35M
BFZ 38/M



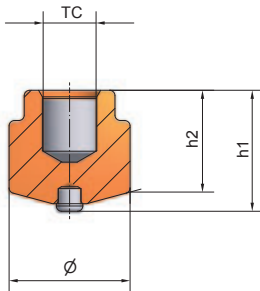
BFZ158
BFZ 3



BFZ233
BFZ 6



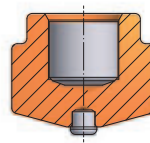
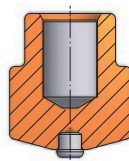
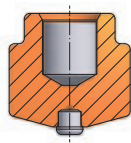
Wear protection/TungStuds



h₁: height before welding
h₂: height after welding

More info see:

www.betek.de/en/productprogramme/tungstuds



BTS01

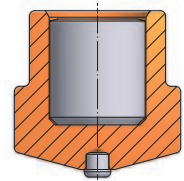
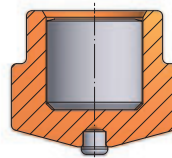
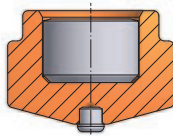
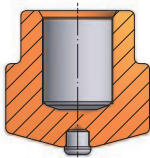
Ø: 16mm
h₁: 16mm
h₂: 11-12mm
TC: Ø7x8,4mm

BTS02

Ø: 16mm
h₁: 19mm
h₂: 14-15mm
TC: Ø7x11,4mm

BTS03

Ø: 19mm
h₁: 16mm
h₂: 10,5-11,5mm
TC: Ø9x8,4mm



BTS04

Ø: 19mm
h₁: 19mm
h₂: 13,5-14,5mm
TC: Ø9x12mm

BTS05

Ø: 22mm
h₁: 16mm
h₂: 10-11mm
TC: Ø12,6x8,4mm

BTS06

Ø: 22mm
h₁: 19mm
h₂: 13-14mm
TC: Ø12,6x12mm

BTS07

Ø: 22mm
h₁: 22mm
h₂: 16-17mm
TC: Ø12,6x14mm

Request Form

Order Form

Invoice address

Delivery address (if different to Invoice address)

BETEK Bergbau- und Hartmetalltechnik
Karl-Heinz Simon GmbH & Co. KG

Sulgener Str. 19-23
D-78733 Aichhalden

Tel + 49 (0) 74 22 / 5 65-590

Fax + 49 (0) 74 22 / 5 65-122

trenchtek@betek.de

www.betek.de

USA

trenchtek-usa@betek.de

Truck

Sea freight

Air freight

Art-No	Description	Quantity	Price / item

Date / signature



US

GB

BETEK Bergbau- und Hartmetalltechnik
Karl-Heinz Simon GmbH & Co. KG

Sulgener Str. 19-23
D-78733 Aichhalden
Germany

Service hotline + 49 (0) 74 22 / 5 65-590

Service fax line + 49 (0) 74 22 / 5 65-122

trenchtek@betek.de
www.betek.de

Sales partner

